

#STEMWOMEN

Gemini



Canis Minor



IDH

4905

**TUESDAYS
4TH & 5TH
PERIOD**

**8/22-
10/18**

PRO DEV WOMEN IN STEM

Dr. Melissa L. Johnson
mjohnson@honors.ufl.edu

Steering students towards majors and careers in the Science, Technology, Engineering, and Mathematics (STEM) disciplines continues to be a hot topic among educators, legislators, and the general public. In this course, we will work with first-year STEM majors to develop a unique action plan for deeper involvement in their discipline, whether that be through undergraduate research, internships, leadership, global experiences, or other opportunities. Also, Girl Power.

FALL 2016

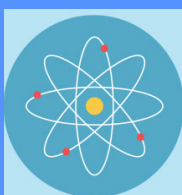
Contacts, Readings, Resources



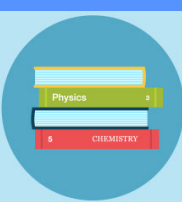
Dr. Melissa L. Johnson | 343 Infirmery
352.392.1519 | mjohnson@honors.ufl.edu



TA's: Grace Kellaher | Sierra Sanchez
Courtney Spillman | Sam Stilley



Canvas: <http://elearning.ufl.edu>
Yellowdig: <http://www.yellowdig.com>

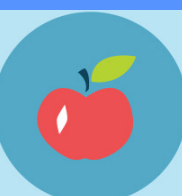


Cuddy, A. (2015). Presence: Bringing Your
Boldest Self to Your Biggest Challenges

Course Guidelines

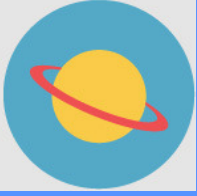


Weekly assignments due Mondays, 11:59pm in Canvas |
Late work = points deducted | Need accommodations?
Documentation from Disability Resources: 352.392.8565



Honor Code implied on all work submitted | Expect grades
within 1 week per assignment | Check UF email on a daily
basis | Expect instructor email response w/in 24-48 hrs,
excluding weekends / holidays

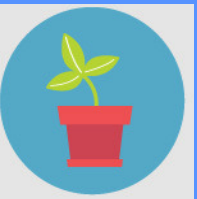
Course Objectives



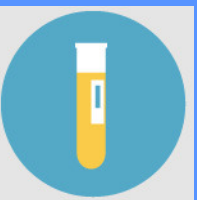
Develop skills in writing, oral presentation, use of technology, and teamwork



Build proficiency with resumes, interviewing, negotiating, and networking



Cultivate mentoring relationships



Identify a plan of action for conquering UF

Grading Scale



A: 93-100%

B-: 80-82%

D+: 67-69%

A-: 90-92%

C+: 77-79%

D: 63-66%

B+: 87-89%

C: 73-76%

D-: 60-62%

B: 83-86%

C-: 70-72%

E: Below 59%



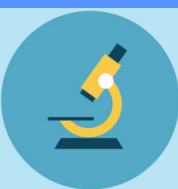
More than 1 unexcused absence = final grade deducted by 1 letter grade per additional absence

Assignments



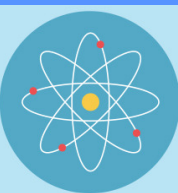
ATTENDANCE & PARTICIPATION | 400 PTS (50 x 8)

- Come to class, on time, don't leave early
- Be an active contributor in class
- Laptops, tablets, mobile devices are OK
- Contact Dr. J w/in 48 hrs of missing class to determine if absence will be excused or not



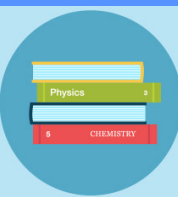
BI-WEEKLY ASSIGNMENTS | 500 PTS (100 x 5)

- Available on Canvas, due Mondays at 11:59pm
- Focuses on resources, short readings, and activities to complete based on course topics
- Allows you to personalize the course topics based on your unique interests



BI-WEEKLY DISCUSSIONS | 400 PTS

- Available on Yellowdig, due Mondays at 11:59pm
- Focuses on resources and articles relevant to course topics
- Each group serves once as discussion leader



PRESENCE DISCUSSIONS | 200 PTS

- Each group leads a 30-45 minute class discussion / activity based on their section of Presence
- Group 1: Intro-Ch 3
- Group 2: Ch 4-6
- Group 3: Ch 7-8
- Group 4: Ch 9-11



PRO DEV CHALLENGE | 500 PTS (250 x 2)

- Complete 1 mission from each group
- Post a photo and a brief (~300 word) review summary from each mission in the designated area on Canvas

GROUP 1 MISSION:

- Individual meeting w/ your peer mentor to discuss your academic, extracurricular, and career interests

GROUP 2 MISSION:

- Research: Attend a research symposium on campus | Attend a workshop sponsored by CUR | Meet with a CURBS peer advisor | Start a research position
- Internships Career: Attend Career Showcase | Attend an E-Day event (engineers) | Attend a career workshop sponsored by the CRC or your major department | Attend a pre-health workshop sponsored by the CLAS pre-health advisors
- Faculty: Interview a faculty member (unique to this class - can't overlap w/ Science for Life) | Attend a professor's lecture on campus sponsored by an academic department | Attend an event sponsored by your Hume faculty mentor (if you live in Hume)
- Service: Participate in Gator Plunge
- Study Abroad: Attend the Study Abroad Fair | Meet with a study abroad advisor / peer advisors | Attend a study abroad info session

Weekly Schedule

- 8/23
 - Topic: Introductions
 - In class: Orientation, Activity, TED Talk, Workbook
 - HW: Bi-weekly Assignment #1
- 8/30
 - Topic: Strengths / Networking
 - In class: Strengths Activity, Speed Networking
 - HW: Bi-weekly Discussion #1
- 9/6
 - Topic: Resumes
 - In class: Presence Discussion Intro-Ch 3, Resume Workshop
 - HW: Bi-weekly Assignment #2
- 9/13
 - Topic: Interview Skills
 - In class: Mock Interview Workshop
 - HW: Bi-weekly Discussion #2
- 9/20
 - Topic: Negotiating
 - In class: Presence Discussion Ch 4-6, Negotiating Workshop
 - HW: Bi-weekly Assignment #3
- 9/27
 - Topic: Mentoring
 - In class: Mentoring Discussion, Mentor Group Activity
 - HW: Bi-weekly Discussion #3
- 10/4
 - Topic: Miscellaneous
 - In class: Presence discussion Ch 7-8, Group Discussion
 - HW: Bi-weekly Assignment #4
- 10/11
 - Topic: Academic Involvement
 - In class: Opportunities panel
 - HW: Bi-weekly Discussion #4
- 10/18
 - Topic: Closing
 - In class: Presence discussion Ch 9-11
 - HW: Bi-weekly Assignment #5, Missions